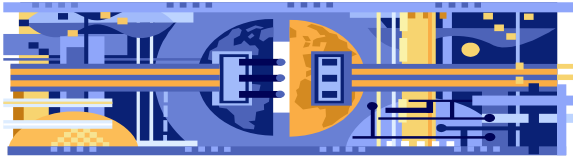


What is Parent Connect?

Parent Connect provides access to information related to your children's academic progress and educational activity.

On a secure web site, with a confidential PIN and password, you can review data currently recorded to your children's educational records.



**There is no charge for
Parent Connect!**

**Romulus Community Schools
36540 Grant Road
Romulus, Michigan 48174**

Non Profit Organization
STANDARD
U.S. Postage Paid
Romulus, Michigan
Permit No. 21

Romulus Community Schools introduces...

»» **Parent Connect**



What did your children have for lunch today?
What did your children receive on yesterday's quiz?
Did your children complete all homework due this week?
Were your children in every class—every day?

These are the types of questions
Parent Connect
will answer for you.



PIN	<input type="text"/>
Password	<input type="text"/>

Getting started...

Parent Connect is accessible by using either a PC or MAC computer.

Login to Parent Connect is...

<https://Zangleweb.resa.net/romulus/parentconnect/>

To receive your PIN and password, please e-mail us at :

parentconnect@romulus.k12.mi.us

Include the following in your e-mail:

- Your full name
- Names and Grade Levels of **all** your children enrolled in Romulus Community Schools.

Example:

Jessica Doe	Romulus EI	3rd Grade
John Doe	M.S.	7th Grade
James Doe	H.S.	9th Grade

Then what happens?

You will receive your PIN and password **as a reply** to your original e-mail. It may take 5 to 10 school days to receive your information depending on the volume of e-mails.

Please do not send more than one e-mail as this slows down response time.

If you receive multiple PINS and passwords, please contact us by e-mail so we can assign only one of these to your child.

If you wish to change your e-mail or password information, please enter your current password for authentication, your desired changes and press submit.



What about next year?

The PIN/password you receive **will remain the same every year** throughout your children's academic career in Romulus and will not be reassigned yearly.

It is important to keep this information on hand for the years your children are in the Romulus School District.



While reviewing your child's information, if you have specific questions about his/her academic progress, please contact his/her teacher.

Note that teachers can be contacted by e-mail which is linked to your account.

If personal information within your children's records is incorrect, please contact their school.

Parent Connect is available by e-mail only to assign access and to resolve any problems you may have with your PIN/Password.

Phone calls are not accepted for the security of your children's information.